

**CYB5A Antibody (Center)**  
**Affinity Purified Rabbit Polyclonal Antibody (Pab)**  
**Catalog # AP14033c****Specification**

---

**CYB5A Antibody (Center) - Product Information**

Application	WB, IHC-P,E
Primary Accession	<a href="#">P00167</a>
Other Accession	<a href="#">NP_001905.1</a> , <a href="#">NP_001177736.1</a> , <a href="#">NP_683725.1</a>
Reactivity	Human
Host	Rabbit
Clonality	Polyclonal
Isotype	Rabbit IgG
Calculated MW	15330
Antigen Region	69-98

**CYB5A Antibody (Center) - Additional Information****Gene ID** 1528**Other Names**

Cytochrome b5, Microsomal cytochrome b5 type A, MCB5, CYB5A, CYB5

**Target/Specificity**

This CYB5A antibody is generated from rabbits immunized with a KLH conjugated synthetic peptide between 69-98 amino acids from the Central region of human CYB5A.

**Dilution**

WB~~1:1000

IHC-P~~1:10~50

E~~Use at an assay dependent concentration.

**Format**

Purified polyclonal antibody supplied in PBS with 0.09% (W/V) sodium azide. This antibody is purified through a protein A column, followed by peptide affinity purification.

**Storage**

Maintain refrigerated at 2-8°C for up to 2 weeks. For long term storage store at -20°C in small aliquots to prevent freeze-thaw cycles.

**Precautions**

CYB5A Antibody (Center) is for research use only and not for use in diagnostic or therapeutic procedures.

**CYB5A Antibody (Center) - Protein Information****Name** CYB5A

**Synonyms** CYB5

**Function** Cytochrome b5 is a membrane-bound hemoprotein functioning as an electron carrier for several membrane-bound oxygenases.

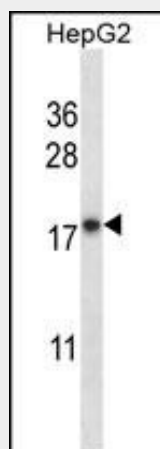
**Cellular Location**

[Isoform 1]: Endoplasmic reticulum membrane; Single-pass membrane protein; Cytoplasmic side. Microsome membrane; Single-pass membrane protein; Cytoplasmic side

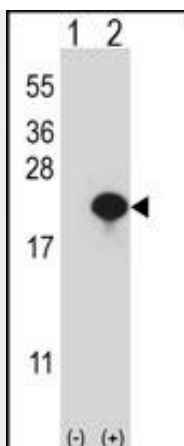
**CYB5A Antibody (Center) - Protocols**

Provided below are standard protocols that you may find useful for product applications.

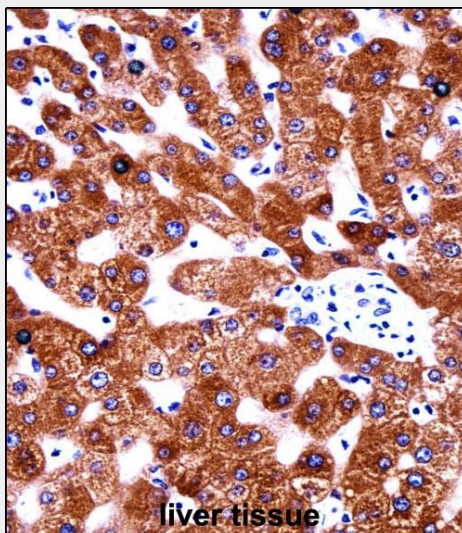
- [Western Blot](#)
- [Blocking Peptides](#)
- [Dot Blot](#)
- [Immunohistochemistry](#)
- [Immunofluorescence](#)
- [Immunoprecipitation](#)
- [Flow Cytometry](#)
- [Cell Culture](#)

**CYB5A Antibody (Center) - Images**

CYB5A Antibody (Center) (Cat. #AP14033c) western blot analysis in HepG2 cell line lysates (35ug/lane). This demonstrates the CYB5A antibody detected the CYB5A protein (arrow).



Western blot analysis of CYB5A (arrow) using rabbit polyclonal CYB5A Antibody (Center) (Cat. #AP14033c). 293 cell lysates (2 ug/lane) either nontransfected (Lane 1) or transiently transfected (Lane 2) with the CYB5A gene.



CYB5A Antibody (Center) (AP14033c) immunohistochemistry analysis in formalin fixed and paraffin embedded human liver tissue followed by peroxidase conjugation of the secondary antibody and DAB staining. This data demonstrates the use of CYB5A Antibody (Center) for immunohistochemistry. Clinical relevance has not been evaluated.

### **CYB5A Antibody (Center) - Background**

The protein encoded by this gene is a membrane-bound cytochrome that reduces ferric hemoglobin (methemoglobin) to ferrous hemoglobin, which is required for stearyl-CoA-desaturase activity. Defects in this gene are a cause of type IV hereditary methemoglobinemia. Three transcript variants encoding different isoforms have been found for this gene.

### **CYB5A Antibody (Center) - References**

Gardner, A.M., et al. J. Biol. Chem. 285(31):23850-23857(2010)  
Kok, R.C., et al. J. Clin. Endocrinol. Metab. 95(3):994-999(2010)  
Sacco, J.C., et al. Pharmacogenet. Genomics 20(1):26-37(2010)  
Maghzal, G.J., et al. J. Biol. Chem. 283(18):12014-12025(2008)  
Inui, H., et al. Biochemistry 46(35):10213-10221(2007)